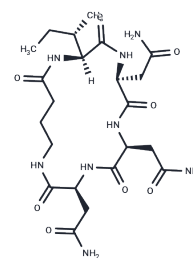


## SPSB2-iNOS inhibitory cyclic peptide-3

## Chemical Properties

CAS No. :	2244164-71-2
Formula:	C <sub>22</sub> H <sub>36</sub> N <sub>8</sub> O <sub>8</sub>
Molecular Weight:	540.57
Storage:	Keep away from moisture Powder: -20°C for 3 years   In solvent: -80°C for 1 year <small>Actual storage temperature shall be subject to the COA.</small>



## Biological Description

Description	<b>**SPSB2-iNOS inhibitory cyclic peptide-3 (Compound CP3)**</b> is an inhibitor that disrupts the interaction between SPRY domain and SOCS-box protein 2 (SPSB2) and iNOS, by binding to SPSB2 at the iNOS site with a K D of 7 nM [1].
Targets(IC50)	NO Synthase

## Preparing Stock Solutions

	1mg	5mg	10mg
1 mM	1.8499 mL	9.2495 mL	18.499 mL
5 mM	0.370 mL	1.8499 mL	3.6998 mL
10 mM	0.185 mL	0.9249 mL	1.8499 mL
50 mM	0.037 mL	0.185 mL	0.370 mL

Please select the appropriate solvent to prepare the stock solution, according to the solubility of the product in different solvents. Please use it as soon as possible.

Note: The dilution table applies only to solid products. For liquid products, please calculate the stock solution based on the stated concentration and/or density.

**Inhibitor · Natural Compounds · Compound Libraries · Recombinant Proteins**

This product is for Research Use Only · Not for Human or Veterinary or Therapeutic Use

Tel:781-999-4286 E\_mail:info@targetmol.com Address:34 Washington Street,Wellesley Hills,MA 02481