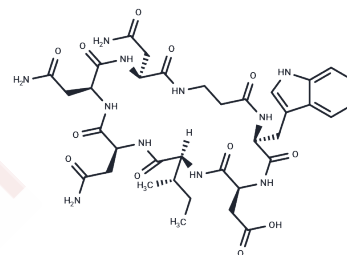


SPSB2-iNOS inhibitory cyclic peptide-2

Chemical Properties

CAS No. :	1989528-33-7
Formula:	C36H49N11O12
Molecular Weight:	827.84
Storage:	Keep away from moisture Powder: -20°C for 3 years In solvent: -80°C for 1 year <small>Actual storage temperature shall be subject to the COA.</small>



Biological Description

Description	Compound CP2, also known as SPSB2-iNOS inhibitory cyclic peptide-2, serves as an inhibitor disrupting the interaction between SPRY domain and SOCS-box protein 2 (SPSB2) and iNOS. It binds to the SPSB2 on the iNOS site with an affinity (K _D) of 21 nM. This peptide is characterized by its resistance to reduction and oxidative stability [1].
Targets(IC50)	NO Synthase

Preparing Stock Solutions

	1mg	5mg	10mg
1 mM	1.208 mL	6.0398 mL	12.0796 mL
5 mM	0.2416 mL	1.208 mL	2.4159 mL
10 mM	0.1208 mL	0.604 mL	1.208 mL
50 mM	0.0242 mL	0.1208 mL	0.2416 mL

Please select the appropriate solvent to prepare the stock solution, according to the solubility of the product in different solvents. Please use it as soon as possible.

Note: The dilution table applies only to solid products. For liquid products, please calculate the stock solution based on the stated concentration and/or density.

Inhibitor · Natural Compounds · Compound Libraries · Recombinant Proteins

This product is for Research Use Only · Not for Human or Veterinary or Therapeutic Use

Tel:781-999-4286 E_mail:info@targetmol.com Address:34 Washington Street,Wellesley Hills,MA 02481