

SHP2-IN-23

Chemical Properties

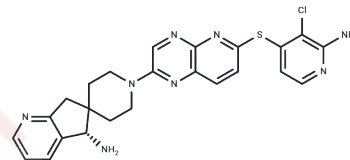
CAS No. : 2415989-91-0

Formula: C₂₄H₂₃ClN₈S

Molecular Weight: 491.01

Storage: Powder: -20°C for 3 years | In solvent: -80°C for 1 year

Actual storage temperature shall be subject to the COA.



Biological Description

Description	SHP2-IN-23 (compound 30) is an orally active inhibitor of SHP2, exhibiting potent activity with an IC ₅₀ value of 38 nM and demonstrating favorable pharmacokinetic profiles and in vivo efficacy. Additionally, it robustly inhibits ERK phosphorylation, achieving an IC ₅₀ of 5 nM [1].
Targets(IC ₅₀)	ERK,Phosphatase

Preparing Stock Solutions

	1mg	5mg	10mg
1 mM	2.0366 mL	10.1831 mL	20.3662 mL
5 mM	0.4073 mL	2.0366 mL	4.0732 mL
10 mM	0.2037 mL	1.0183 mL	2.0366 mL
50 mM	0.0407 mL	0.2037 mL	0.4073 mL

Please select the appropriate solvent to prepare the stock solution, according to the solubility of the product in different solvents. Please use it as soon as possible.

Note: The dilution table applies only to solid products. For liquid products, please calculate the stock solution based on the stated concentration and/or density.

Inhibitor · Natural Compounds · Compound Libraries · Recombinant Proteins

This product is for Research Use Only · Not for Human or Veterinary or Therapeutic Use

Tel:781-999-4286

E_mail:info@targetmol.com

Address:34 Washington Street,Wellesley Hills,MA 02481