

SHP1-IN-1

Chemical Properties

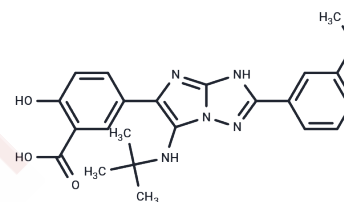
CAS No. : 2956720-62-8

Formula: C₂₂H₂₃N₅O₄

Molecular Weight: 421.45

Storage: Powder: -20°C for 3 years | In solvent: -80°C for 1 year

Actual storage temperature shall be subject to the COA.



Biological Description

Description	SHP1-IN-1 (compound 5p) serves as a fluorescent probe for the protein tyrosine phosphatase SHP1, which includes the Src homology 2 domain. This compound demonstrates selective inhibition of SHP1, affinity for Fe ³⁺ ions, and robust fluorescence characteristics. Additionally, SHP1-IN-1 exhibits an aggregation-caused quenching (ACQ) effect, has excellent resistance to interference, and maintains a low detection limit (5.55 μM) [1].
Targets(IC50)	Others, Phosphatase

Preparing Stock Solutions

	1mg	5mg	10mg
1 mM	2.3728 mL	11.8638 mL	23.7276 mL
5 mM	0.4746 mL	2.3728 mL	4.7455 mL
10 mM	0.2373 mL	1.1864 mL	2.3728 mL
50 mM	0.0475 mL	0.2373 mL	0.4746 mL

Please select the appropriate solvent to prepare the stock solution, according to the solubility of the product in different solvents. Please use it as soon as possible.

Note: The dilution table applies only to solid products. For liquid products, please calculate the stock solution based on the stated concentration and/or density.

Inhibitor · Natural Compounds · Compound Libraries · Recombinant Proteins

This product is for Research Use Only · Not for Human or Veterinary or Therapeutic Use

Tel: 781-999-4286

E_mail: info@targetmol.com

Address: 34 Washington Street, Wellesley Hills, MA 02481