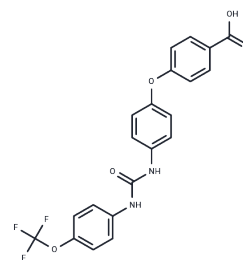


sEH-IN-1

## Chemical Properties

CAS No. : 1061377-99-8  
 Formula: C<sub>21</sub>H<sub>15</sub>F<sub>3</sub>N<sub>2</sub>O<sub>5</sub>  
 Molecular Weight: 432.35  
 Storage: Powder: -20°C for 3 years | In solvent: -80°C for 1 year  
 Actual storage temperature shall be subject to the COA.



## Biological Description

Description	sEH-IN-1 (example 67), an inhibitor of soluble epoxide hydrolase (sEH), is utilized in studying diseases mediated by sEH, including hypertension, cardiovascular disease, inflammation, and diabetes [1].
Targets(IC50)	Epoxide Hydrolase

## Preparing Stock Solutions

	1mg	5mg	10mg
1 mM	2.3129 mL	11.5647 mL	23.1294 mL
5 mM	0.4626 mL	2.3129 mL	4.6259 mL
10 mM	0.2313 mL	1.1565 mL	2.3129 mL
50 mM	0.0463 mL	0.2313 mL	0.4626 mL

Please select the appropriate solvent to prepare the stock solution, according to the solubility of the product in different solvents. Please use it as soon as possible.

Note: The dilution table applies only to solid products. For liquid products, please calculate the stock solution based on the stated concentration and/or density.

Inhibitor · Natural Compounds · Compound Libraries · Recombinant Proteins

This product is for Research Use Only · Not for Human or Veterinary or Therapeutic Use

Tel:781-999-4286 E\_mail:info@targetmol.com Address:34 Washington Street,Wellesley Hills,MA 02481