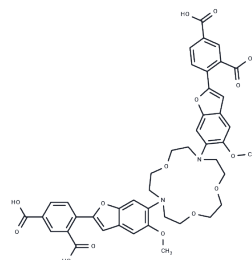


SBFI

Chemical Properties

CAS No. :	124549-08-2
Formula:	C ₄₄ H ₄₂ N ₂ O ₁₅
Molecular Weight:	838.81
Storage:	Powder: -20°C for 3 years In solvent: -80°C for 1 year Actual storage temperature shall be subject to the COA.



Biological Description

Description	SBFI is a membrane-permeant fluorescent Na ⁺ indicator dye, excited at 340 nm with emission collected at 450 nm [1]. It selectively indicates Na ⁺ over K ⁺ with K _d values of 20 mM and 120 mM for these ions, respectively [2].
Targets(IC ₅₀)	Others
In vitro	<p>The preparation method for SBFI dye of each sample is as follows: [1] 1. Dissolve an appropriate amount of dye powder in 3 mL of dimethyl sulfoxide. 2. Stir the five solutions for 5 minutes. 3. Expose each sample to ultraviolet light using a Leitz Orthoplan microscope and record the fluorescence levels. 4. Obtain a total of ten readings for each solution, stirring between readings. 5. Plot the maximum, minimum, and median values based on dye concentration for each set of sample results. 6. The optimal fluorescence value with minimal variation in upper and lower limits was determined using 50 µg SBFI dye.</p> <p>The above information is based on published literature. Experimental procedures should be appropriately modified to meet specific research demands.</p>

Preparing Stock Solutions

	1mg	5mg	10mg
1 mM	1.1922 mL	5.9608 mL	11.9217 mL
5 mM	0.2384 mL	1.1922 mL	2.3843 mL
10 mM	0.1192 mL	0.5961 mL	1.1922 mL
50 mM	0.0238 mL	0.1192 mL	0.2384 mL

Please select the appropriate solvent to prepare the stock solution, according to the solubility of the product in different solvents. Please use it as soon as possible.

Note: The dilution table applies only to solid products. For liquid products, please calculate the stock solution based on the stated concentration and/or density.

Inhibitor · Natural Compounds · Compound Libraries · Recombinant Proteins

This product is for Research Use Only · Not for Human or Veterinary or Therapeutic Use

Tel:781-999-4286 E_mail:info@targetmol.com Address:34 Washington Street,Wellesley Hills,MA 02481