

SB-1436

Chemical Properties

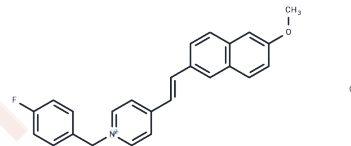
CAS No. : 2925298-08-2

Formula: C₂₅H₂₁ClFNO

Molecular Weight: 405.89

Storage: Powder: -20°C for 3 years | In solvent: -80°C for 1 year

Actual storage temperature shall be subject to the COA.



Biological Description

Description	SB-1436 is a Cholinesterase (ChE) inhibitor that inhibits acetylcholinesterase (AChE), butyrylcholinesterase (BChE), and recombinant human acetylcholinesterase (rHuAChE) with IC ₅₀ values of 0.176, 0.37, and 0.08 μM, respectively. It inhibits AChE and BChE in a non-competitive manner with K _i values of 0.046 and 0.115 μM, respectively. Additionally, SB-1436 significantly prevents the self-aggregation of Aβ and can be used for neurological disease research [1].
Targets(IC ₅₀)	Cholinesterase (ChE)
In vitro	SB-1436 (Compound 7av) at a concentration of 1 μM for 20 minutes inhibits AChE, BChE, and rHuAChE, with IC ₅₀ values of 0.176, 0.37, and 0.08 μM, respectively [1]. This compound, administered at concentrations ranging from 0.78 to 100 μM for 48 hours, decreases the viability of J774A.1 cells and primary astrocytes, with a GI ₅₀ of approximately 6.25 μM in both cell lines [1].

Preparing Stock Solutions

	1mg	5mg	10mg
1 mM	2.4637 mL	12.3186 mL	24.6372 mL
5 mM	0.4927 mL	2.4637 mL	4.9274 mL
10 mM	0.2464 mL	1.2319 mL	2.4637 mL
50 mM	0.0493 mL	0.2464 mL	0.4927 mL

Please select the appropriate solvent to prepare the stock solution, according to the solubility of the product in different solvents. Please use it as soon as possible.

Note: The dilution table applies only to solid products. For liquid products, please calculate the stock solution based on the stated concentration and/or density.

Inhibitor · Natural Compounds · Compound Libraries · Recombinant Proteins

This product is for Research Use Only · Not for Human or Veterinary or Therapeutic Use

Tel:781-999-4286 E_mail:info@targetmol.com Address:34 Washington Street,Wellesley Hills,MA 02481