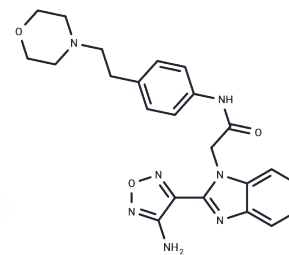


S16-1029

Chemical Properties

CAS No. : 2653349-51-8
 Formula: C23H25N7O3
 Molecular Weight: 447.49
 Storage: Powder: -20°C for 3 years | In solvent: -80°C for 1 year
 Actual storage temperature shall be subject to the COA.



Biological Description

Description	S16-1029 is a selective, orally active butyrylcholinesterase (BChE) inhibitor with IC50 values of 11.35 nM for eqBChE and 48.1 nM for hBChE. It can cross the blood-brain barrier (BBB) and reach the central nervous system (CNS), making it suitable for Alzheimer's disease (AD) research [1].
Targets(IC50)	Cholinesterase (ChE)

Preparing Stock Solutions

	1mg	5mg	10mg
1 mM	2.2347 mL	11.1734 mL	22.3469 mL
5 mM	0.4469 mL	2.2347 mL	4.4694 mL
10 mM	0.2235 mL	1.1173 mL	2.2347 mL
50 mM	0.0447 mL	0.2235 mL	0.4469 mL

Please select the appropriate solvent to prepare the stock solution, according to the solubility of the product in different solvents. Please use it as soon as possible.

Note: The dilution table applies only to solid products. For liquid products, please calculate the stock solution based on the stated concentration and/or density.

Inhibitor · Natural Compounds · Compound Libraries · Recombinant Proteins

This product is for Research Use Only · Not for Human or Veterinary or Therapeutic Use

Tel:781-999-4286 E_mail:info@targetmol.com Address:34 Washington Street,Wellesley Hills,MA 02481