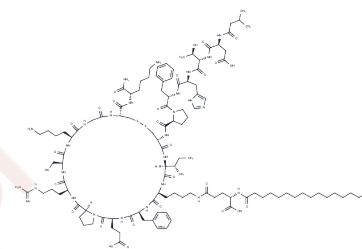


Rusfertide

Chemical Properties

CAS No. :	1628323-80-7
Formula:	C114H181N27O28S2
Molecular Weight:	2441.95
Storage:	Keep away from moisture Powder: -20°C for 3 years In solvent: -80°C for 1 year <small>Actual storage temperature shall be subject to the COA.</small>



Biological Description

Description	Rusfertide, a peptide mimetic of natural hepcidin, targets and degrades ferroportin, thereby reducing serum iron and transferrin saturation, which helps regulate red blood cell production. It ameliorates conditions such as polycythemia vera, β -thalassemia, and hereditary hemochromatosis [1] [2].
Targets(IC50)	Ferroportin
In vivo	Rusfertide reduces iron toxicity within red blood cells (RBCs) at a dosage of 1 mg/kg administered subcutaneously every two days for 49 days and decreases transferrin saturation at 2.5 mg/kg under the same administration schedule for two weeks. This enhances the oxygen-carrying capacity of RBCs and ameliorates anemia and iron accumulation in β -thalassemia and hereditary hemochromatosis mouse models [1]. Animal Model: Hbb th3/+ mice model for β -thalassemia and hereditary hemochromatosis [1] Dosage: 1 and 2.5 mg/kg Administration: s.c., once every two days, for 49 days (1 mg/kg); or for 2 weeks (2.5 mg/kg) Result: Improved the survival rate of RBCs in β -thalassemia model. Reduced transferrin-saturation and iron deposition.

Preparing Stock Solutions

	1mg	5mg	10mg
1 mM	0.4095 mL	2.0475 mL	4.0951 mL
5 mM	0.0819 mL	0.4095 mL	0.819 mL
10 mM	0.041 mL	0.2048 mL	0.4095 mL
50 mM	0.0082 mL	0.041 mL	0.0819 mL

Please select the appropriate solvent to prepare the stock solution, according to the solubility of the product in different solvents. Please use it as soon as possible.

Note: The dilution table applies only to solid products. For liquid products, please calculate the stock solution based on the stated concentration and/or density.

Inhibitor · Natural Compounds · Compound Libraries · Recombinant Proteins

This product is for Research Use Only · Not for Human or Veterinary or Therapeutic Use

Tel:781-999-4286 E_mail:info@targetmol.com Address:34 Washington Street,Wellesley Hills,MA 02481