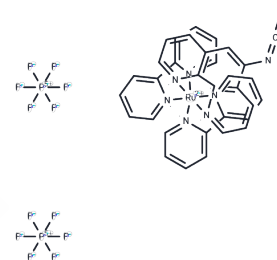


Ru(bpy)2(phen-ITC)(PF6)2

Chemical Properties

CAS No. :	288399-07-5
Formula:	C33H23F12N7P2RuS
Molecular Weight:	940.65
Storage:	Powder: -20°C for 3 years In solvent: -80°C for 1 year Actual storage temperature shall be subject to the COA.



Biological Description

Description	Ru(bpy)2(phen-ITC)(PF6)2 is a versatile dye employed extensively across various domains, including biological experimentation and industrial applications. In biological settings, this dye enables scientists to observe and analyze cell structures, track biomolecules, evaluate cellular functions, differentiate between cell types, detect biomolecules, study tissue pathology, and monitor microorganisms. Its utility extends beyond scientific research, encompassing diagnostic uses in clinical settings. Additionally, Ru(bpy)2(phen-ITC)(PF6)2 finds application in traditional industries like textile dyeing and emerging sectors such as functional textile processing, food coloring, and dye-sensitized solar cells. This broad applicability underscores its significance in both scientific and industrial fields.
Targets(IC50)	Others

Preparing Stock Solutions

	1mg	5mg	10mg
1 mM	1.0631 mL	5.3155 mL	10.6309 mL
5 mM	0.2126 mL	1.0631 mL	2.1262 mL
10 mM	0.1063 mL	0.5315 mL	1.0631 mL
50 mM	0.0213 mL	0.1063 mL	0.2126 mL

Please select the appropriate solvent to prepare the stock solution, according to the solubility of the product in different solvents. Please use it as soon as possible.

Note: The dilution table applies only to solid products. For liquid products, please calculate the stock solution based on the stated concentration and/or density.

Inhibitor · Natural Compounds · Compound Libraries · Recombinant Proteins

This product is for Research Use Only · Not for Human or Veterinary or Therapeutic Use

Tel:781-999-4286 E_mail:info@targetmol.com Address:34 Washington Street,Wellesley Hills,MA 02481