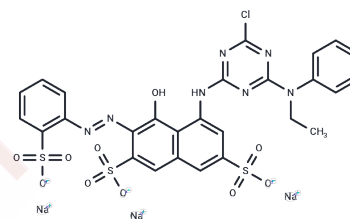


## Reactive red 24:1

### Chemical Properties

CAS No. : 72829-25-5  
 Formula: C<sub>27</sub>H<sub>19</sub>ClN<sub>7</sub>Na<sub>3</sub>O<sub>10</sub>S<sub>3</sub>  
 Molecular Weight: 802.1  
 Storage: Powder: -20°C for 3 years | In solvent: -80°C for 1 year  
 Actual storage temperature shall be subject to the COA.



### Biological Description

Description	Reactive Red 24:1 is a common textile dye that can be adsorbed onto single-walled carbon nanotubes (SWCNTs) through electrostatic interactions, enabling the separation of residual dyes.
Targets(IC50)	Others

### Preparing Stock Solutions

	1mg	5mg	10mg
1 mM	1.2467 mL	6.2336 mL	12.4673 mL
5 mM	0.2493 mL	1.2467 mL	2.4935 mL
10 mM	0.1247 mL	0.6234 mL	1.2467 mL
50 mM	0.0249 mL	0.1247 mL	0.2493 mL

Please select the appropriate solvent to prepare the stock solution, according to the solubility of the product in different solvents. Please use it as soon as possible.

Note: The dilution table applies only to solid products. For liquid products, please calculate the stock solution based on the stated concentration and/or density.

**Inhibitor · Natural Compounds · Compound Libraries · Recombinant Proteins**

This product is for Research Use Only · Not for Human or Veterinary or Therapeutic Use

Tel:781-999-4286 E\_mail:info@targetmol.com Address:34 Washington Street,Wellesley Hills,MA 02481