

Reactive red 24

Chemical Properties

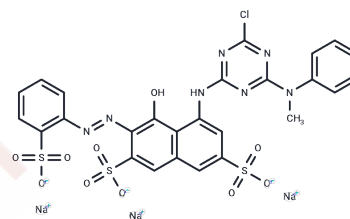
CAS No. : 70210-20-7

Formula: C₂₆H₁₇ClN₇Na₃O₁₀S₃

Molecular Weight: 788.07

Storage: Powder: -20°C for 3 years | In solvent: -80°C for 1 year

Actual storage temperature shall be subject to the COA.



Biological Description

Description	Reactive Red 24 is a multifunctional dye used in biological experiments to observe and analyze cell structures, track biomolecules, evaluate cell functions, distinguish cell types, detect biomolecules, study tissue pathology, and monitor microorganisms. Its applications span from basic scientific research to clinical diagnostics. Additionally, dyes like Reactive Red 24 are employed in traditional fields such as textile dyeing and emerging areas like functional textile processing, food pigments, and dye-sensitized solar cells.
Targets(IC50)	Others

Preparing Stock Solutions

	1mg	5mg	10mg
1 mM	1.2689 mL	6.3446 mL	12.6892 mL
5 mM	0.2538 mL	1.2689 mL	2.5378 mL
10 mM	0.1269 mL	0.6345 mL	1.2689 mL
50 mM	0.0254 mL	0.1269 mL	0.2538 mL

Please select the appropriate solvent to prepare the stock solution, according to the solubility of the product in different solvents. Please use it as soon as possible.

Note: The dilution table applies only to solid products. For liquid products, please calculate the stock solution based on the stated concentration and/or density.

Inhibitor · Natural Compounds · Compound Libraries · Recombinant Proteins

This product is for Research Use Only · Not for Human or Veterinary or Therapeutic Use

Tel:781-999-4286

E_mail:info@targetmol.com

Address:34 Washington Street,Wellesley Hills,MA 02481