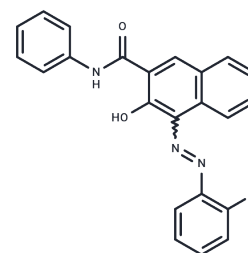


Pigment red 21

Chemical Properties

CAS No. :	6410-26-0
Formula:	C ₂₃ H ₁₆ ClN ₃ O ₂
Molecular Weight:	401.85
Storage:	Powder: -20°C for 3 years In solvent: -80°C for 1 year Actual storage temperature shall be subject to the COA.



Biological Description

Description	Pigment Red 21 is a multifunctional dye used in biological experiments to help researchers observe and analyze cell structures, track biomolecules, evaluate cell functions, distinguish cell types, detect biomolecules, study tissue pathology, and monitor microorganisms. Its applications span from basic scientific research to clinical diagnostics. Additionally, dyes are widely employed in traditional fields like textile dyeing, and in emerging fields such as functional textile processing, food pigments, and dye-sensitized solar cells.
Targets(IC50)	Others

Preparing Stock Solutions

	1mg	5mg	10mg
1 mM	2.4885 mL	12.4425 mL	24.8849 mL
5 mM	0.4977 mL	2.4885 mL	4.977 mL
10 mM	0.2488 mL	1.2442 mL	2.4885 mL
50 mM	0.0498 mL	0.2488 mL	0.4977 mL

Please select the appropriate solvent to prepare the stock solution, according to the solubility of the product in different solvents. Please use it as soon as possible.

Note: The dilution table applies only to solid products. For liquid products, please calculate the stock solution based on the stated concentration and/or density.

Inhibitor · Natural Compounds · Compound Libraries · Recombinant Proteins

This product is for Research Use Only · Not for Human or Veterinary or Therapeutic Use

Tel:781-999-4286 E_mail:info@targetmol.com Address:34 Washington Street,Wellesley Hills,MA 02481