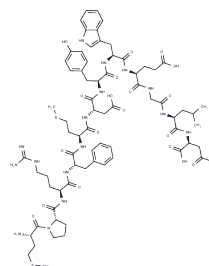


Phage-derived 12/1 peptide

Chemical Properties

CAS No. :	186180-20-1
Formula:	C71H99N17O19S2
Molecular Weight:	1558.78
Storage:	Keep away from moisture Powder: -20°C for 3 years In solvent: -80°C for 1 year <small>Actual storage temperature shall be subject to the COA.</small>



Biological Description

Description	Phage-derived 12/1 peptide demonstrates antitumor activity by targeting MDM2 and MDMX, thereby disrupting the MDM2-p53 and MDMX-p53 interactions, with IC50 values of 0.15 and 1.25 μ M, respectively [1].
Targets(IC50)	MDM-2/p53

Preparing Stock Solutions

	1mg	5mg	10mg
1 mM	0.6415 mL	3.2076 mL	6.4153 mL
5 mM	0.1283 mL	0.6415 mL	1.2831 mL
10 mM	0.0642 mL	0.3208 mL	0.6415 mL
50 mM	0.0128 mL	0.0642 mL	0.1283 mL

Please select the appropriate solvent to prepare the stock solution, according to the solubility of the product in different solvents. Please use it as soon as possible.

Note: The dilution table applies only to solid products. For liquid products, please calculate the stock solution based on the stated concentration and/or density.

Inhibitor · Natural Compounds · Compound Libraries · Recombinant Proteins

This product is for Research Use Only · Not for Human or Veterinary or Therapeutic Use

Tel: 781-999-4286 E_mail: info@targetmol.com Address: 34 Washington Street, Wellesley Hills, MA 02481