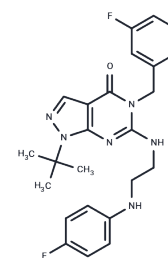


PDE1-IN-6

Chemical Properties

| | |
|-------------------|---|
| CAS No. : | 2877017-16-6 |
| Formula: | C ₂₄ H ₂₆ F ₂ N ₆ O |
| Molecular Weight: | 452.50 |
| Storage: | Powder: -20°C for 3 years In solvent: -80°C for 1 year Actual storage temperature shall be subject to the COA. |



Biological Description

| | |
|----------------------------|---|
| Description | PDE1-IN-6 (compound 6c) functions as a highly selective PDE1 inhibitor, exhibiting an IC ₅₀ value of 7.5 nM. It notably inhibits proliferation and induces apoptosis in acute myelogenous leukemia cells [1]. |
| Targets(IC ₅₀) | Apoptosis, Phosphatase |
| In vitro | PDE1-IN-6 (compound 6c) at concentrations of 10 and 20 μM over 48 hours, induces apoptosis in U937 and ML-1 cells [1]. In the same conditions, it downregulates the expression of the proteins caspase-3, 7, 9, PARP, Bcl-2, and Bcl-xl, while increasing the expression of their cleaved forms in these cells [1]. Apoptosis Analysis [1] involved cell lines U937 and ML-1 with concentrations set at 10, 20 μM and an incubation period of 48 hours, confirming induced apoptosis. Western Blot Analysis [1] also using U937 and ML-1 cell lines, at 10, 20 μM for 48 hours, showed reduced expression of caspase-3, 7, 9, PARP, Bcl-2, and Bcl-xl proteins, alongside an increase in their cleaved caspase-3, 7, 9 forms. |

Preparing Stock Solutions

| | 1mg | 5mg | 10mg |
|-------|-----------|------------|------------|
| 1 mM | 2.2099 mL | 11.0497 mL | 22.0994 mL |
| 5 mM | 0.442 mL | 2.2099 mL | 4.4199 mL |
| 10 mM | 0.221 mL | 1.105 mL | 2.2099 mL |
| 50 mM | 0.0442 mL | 0.221 mL | 0.442 mL |

Please select the appropriate solvent to prepare the stock solution, according to the solubility of the product in different solvents. Please use it as soon as possible.

Note: The dilution table applies only to solid products. For liquid products, please calculate the stock solution based on the stated concentration and/or density.

Inhibitor · Natural Compounds · Compound Libraries · Recombinant Proteins

This product is for Research Use Only · Not for Human or Veterinary or Therapeutic Use

Tel:781-999-4286 E_mail:info@targetmol.com Address:34 Washington Street,Wellesley Hills,MA 02481