

PD 156252

## Chemical Properties

CAS No. : 175592-65-1

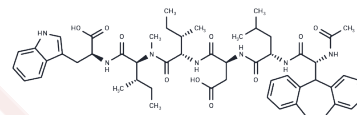
Formula: C53H69N7O10

Molecular Weight: 964.16

Keep away from moisture

Storage: Powder: -20°C for 3 years | In solvent: -80°C for 1 year

Actual storage temperature shall be subject to the COA.



## Biological Description

Description	PD 156252 is a hexapeptide and a highly potent endothelin (ET) antagonist, exhibiting enhanced binding affinity for rabbit ETA and rat ETB receptor subtypes with IC50 values of 1.0 nM and 40 nM, respectively.
Targets(IC50)	Endothelin Receptor

## Preparing Stock Solutions

	1mg	5mg	10mg
1 mM	1.0372 mL	5.1859 mL	10.3717 mL
5 mM	0.2074 mL	1.0372 mL	2.0743 mL
10 mM	0.1037 mL	0.5186 mL	1.0372 mL
50 mM	0.0207 mL	0.1037 mL	0.2074 mL

Please select the appropriate solvent to prepare the stock solution, according to the solubility of the product in different solvents. Please use it as soon as possible.

Note: The dilution table applies only to solid products. For liquid products, please calculate the stock solution based on the stated concentration and/or density.

Inhibitor · Natural Compounds · Compound Libraries · Recombinant Proteins

This product is for Research Use Only · Not for Human or Veterinary or Therapeutic Use

Tel:781-999-4286

E\_mail:info@targetmol.com

Address:34 Washington Street,Wellesley Hills,MA 02481