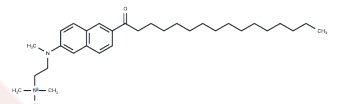


Patman

Chemical Properties

CAS No. :	87393-54-2
Formula:	C ₃₂ H ₅₃ ClN ₂ O
Molecular Weight:	517.23
Storage:	Powder: -20°C for 3 years In solvent: -80°C for 1 year Actual storage temperature shall be subject to the COA.



Biological Description

Description	Patman is a polarity-sensitive dye [1].
Targets(IC50)	Others

Preparing Stock Solutions

	1mg	5mg	10mg
1 mM	1.9334 mL	9.6669 mL	19.3338 mL
5 mM	0.3867 mL	1.9334 mL	3.8668 mL
10 mM	0.1933 mL	0.9667 mL	1.9334 mL
50 mM	0.0387 mL	0.1933 mL	0.3867 mL

Please select the appropriate solvent to prepare the stock solution, according to the solubility of the product in different solvents. Please use it as soon as possible.

Note: The dilution table applies only to solid products. For liquid products, please calculate the stock solution based on the stated concentration and/or density.

Inhibitor · Natural Compounds · Compound Libraries · Recombinant Proteins

This product is for Research Use Only · Not for Human or Veterinary or Therapeutic Use

Tel:781-999-4286 E_mail:info@targetmol.com Address:34 Washington Street,Wellesley Hills,MA 02481