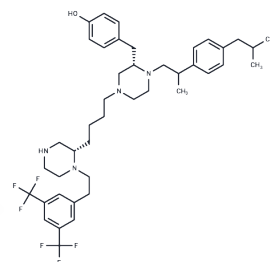


PAT-IN-2

Chemical Properties

CAS No. :	2066572-01-6
Formula:	C42H56F6N4O
Molecular Weight:	746.91
Storage:	Powder: -20°C for 3 years In solvent: -80°C for 1 year Actual storage temperature shall be subject to the COA.



Biological Description

Description	PAT-IN-2 is an inhibitor of protein acyl transferases (PAT) that competitively blocks Erf2 autopalmitylation, as referenced in WO2017011518A1; compound 25 [1].
Targets(IC50)	Ras
In vitro	PAT-IN-2 (compound 25) completely inhibits the growth of RJY1941 (control) at a concentration of 20 μ M, without detectable effects at lower concentrations. Additionally, PAT-IN-2 suppresses the growth of RJY1942 (palmitylation-sensitive) at 5 μ M. [1].

Preparing Stock Solutions

	1mg	5mg	10mg
1 mM	1.3388 mL	6.6942 mL	13.3885 mL
5 mM	0.2678 mL	1.3388 mL	2.6777 mL
10 mM	0.1339 mL	0.6694 mL	1.3388 mL
50 mM	0.0268 mL	0.1339 mL	0.2678 mL

Please select the appropriate solvent to prepare the stock solution, according to the solubility of the product in different solvents. Please use it as soon as possible.

Note: The dilution table applies only to solid products. For liquid products, please calculate the stock solution based on the stated concentration and/or density.

Inhibitor · Natural Compounds · Compound Libraries · Recombinant Proteins

This product is for Research Use Only · Not for Human or Veterinary or Therapeutic Use

Tel:781-999-4286 E_mail:info@targetmol.com Address:34 Washington Street,Wellesley Hills,MA 02481