

## PAT-IN-1

## Chemical Properties

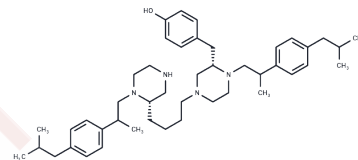
CAS No. : 2066571-97-7

Formula: C<sub>45</sub>H<sub>68</sub>N<sub>4</sub>O

Molecular Weight: 681.05

Storage: Powder: -20°C for 3 years | In solvent: -80°C for 1 year

Actual storage temperature shall be subject to the COA.



## Biological Description

Description	PAT-IN-1, a protein acyl transferases (PAT) inhibitor, competitively inhibits Erf2 autopalmitoylation (WO2017011518A1; compound 13) [1].
Targets(IC50)	Ras
In vitro	PAT-IN-1 (compound 13) completely inhibits the growth of RJY1941 (control) at 20 $\mu$ M, with no detectable effect at lower concentrations. At 5 $\mu$ M, PAT-IN-1 inhibits 100% of the growth of RJY1942 (palmitoylation-sensitive) [1].

## Preparing Stock Solutions

	1mg	5mg	10mg
1 mM	1.4683 mL	7.3416 mL	14.6832 mL
5 mM	0.2937 mL	1.4683 mL	2.9366 mL
10 mM	0.1468 mL	0.7342 mL	1.4683 mL
50 mM	0.0294 mL	0.1468 mL	0.2937 mL

Please select the appropriate solvent to prepare the stock solution, according to the solubility of the product in different solvents. Please use it as soon as possible.

Note: The dilution table applies only to solid products. For liquid products, please calculate the stock solution based on the stated concentration and/or density.

Inhibitor · Natural Compounds · Compound Libraries · Recombinant Proteins

This product is for Research Use Only · Not for Human or Veterinary or Therapeutic Use

Tel:781-999-4286

E\_mail:info@targetmol.com

Address:34 Washington Street,Wellesley Hills,MA 02481