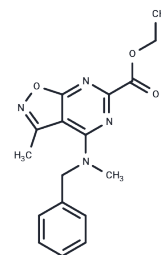


PAT1inh-A0030

Chemical Properties

CAS No. : 1030097-65-4
 Formula: C17H18N4O3
 Molecular Weight: 326.35
 Storage: Powder: -20°C for 3 years | In solvent: -80°C for 1 year
 Actual storage temperature shall be subject to the COA.



Biological Description

Description	PAT1inh-A0030 is a selective inhibitor of PAT1 (SLC26A6) with an IC ₅₀ value of 1.0 μM. It inhibits fluid absorption in the ileum of wild-type and cystic fibrosis (CF) mice (CftrdelF508/delF508) in a closed-loop model of intestinal fluid absorption and can be used in the study of intestinal diseases related to CF [1].
Targets(IC50)	Others,Chloride channel

Preparing Stock Solutions

	1mg	5mg	10mg
1 mM	3.0642 mL	15.321 mL	30.6419 mL
5 mM	0.6128 mL	3.0642 mL	6.1284 mL
10 mM	0.3064 mL	1.5321 mL	3.0642 mL
50 mM	0.0613 mL	0.3064 mL	0.6128 mL

Please select the appropriate solvent to prepare the stock solution, according to the solubility of the product in different solvents. Please use it as soon as possible.

Note: The dilution table applies only to solid products. For liquid products, please calculate the stock solution based on the stated concentration and/or density.

Inhibitor · Natural Compounds · Compound Libraries · Recombinant Proteins

This product is for Research Use Only · Not for Human or Veterinary or Therapeutic Use

Tel:781-999-4286 E_mail:info@targetmol.com Address:34 Washington Street,Wellesley Hills,MA 02481