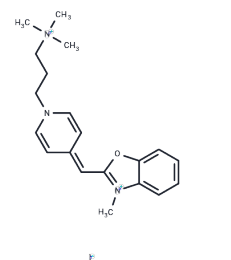


Oxazole blue

Chemical Properties

| | |
|-------------------|---------------------------------------------------------------------------------------------------------------------|
| CAS No. : | 157199-56-9 |
| Formula: | C ₂₀ H ₂₇ I ₂ N ₃ O |
| Molecular Weight: | 579.26 |
| Storage: | Powder: -20°C for 3 years In solvent: -80°C for 1 year Actual storage temperature shall be subject to the COA. |



Biological Description

| | |
|---------------|-------------------------------------------------------------------------------------------------------------------------------------------------------------------------------------------------------------------------------------------------------------------------------------------------------------------------------------------------------------------------------------------------------------------------------------------------------------------------------------------------------------------------------------------------------------------------|
| Description | Oxazole blue is a multifunctional dye used in various applications, including biological experiments, textile dyeing, and emerging fields like functional textile processing, food pigments, and dye-sensitized solar cells. In biological research, dyes assist researchers in observing and analyzing cell structures, tracking biomolecules, evaluating cell functions, distinguishing cell types, detecting biomolecules, studying tissue pathology, and monitoring microorganisms. Their applications span from basic scientific research to clinical diagnostics. |
| Targets(IC50) | Others |

Preparing Stock Solutions

| | 1mg | 5mg | 10mg |
|-------|-----------|-----------|------------|
| 1 mM | 1.7263 mL | 8.6317 mL | 17.2634 mL |
| 5 mM | 0.3453 mL | 1.7263 mL | 3.4527 mL |
| 10 mM | 0.1726 mL | 0.8632 mL | 1.7263 mL |
| 50 mM | 0.0345 mL | 0.1726 mL | 0.3453 mL |

Please select the appropriate solvent to prepare the stock solution, according to the solubility of the product in different solvents. Please use it as soon as possible.

Note: The dilution table applies only to solid products. For liquid products, please calculate the stock solution based on the stated concentration and/or density.

Inhibitor · Natural Compounds · Compound Libraries · Recombinant Proteins

This product is for Research Use Only · Not for Human or Veterinary or Therapeutic Use

Tel:781-999-4286 E_mail:info@targetmol.com Address:34 Washington Street,Wellesley Hills,MA 02481