

OSU-ERb-12

## Chemical Properties

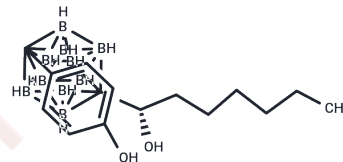
CAS No. : 2088837-20-9

Formula: C<sub>15</sub>H<sub>30</sub>B<sub>10</sub>O<sub>2</sub>

Molecular Weight: 350.51

Storage: Powder: -20°C for 3 years | In solvent: -80°C for 1 year

Actual storage temperature shall be subject to the COA.



## Biological Description

Description	OSU-ERb-12 is an ER $\beta$ agonist that suppresses ovarian cancer cell proliferation both in vitro and in vivo, and decreases the expression of Snail [1] [2].
Targets(IC50)	Estrogen Receptor/ERR

## Preparing Stock Solutions

	1mg	5mg	10mg
1 mM	2.853 mL	14.2649 mL	28.5299 mL
5 mM	0.5706 mL	2.853 mL	5.706 mL
10 mM	0.2853 mL	1.4265 mL	2.853 mL
50 mM	0.0571 mL	0.2853 mL	0.5706 mL

Please select the appropriate solvent to prepare the stock solution, according to the solubility of the product in different solvents. Please use it as soon as possible.

Note: The dilution table applies only to solid products. For liquid products, please calculate the stock solution based on the stated concentration and/or density.

Inhibitor · Natural Compounds · Compound Libraries · Recombinant Proteins

This product is for Research Use Only · Not for Human or Veterinary or Therapeutic Use

Tel: 781-999-4286 E\_mail: info@targetmol.com Address: 34 Washington Street, Wellesley Hills, MA 02481