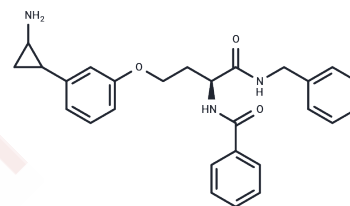


NCL1

Chemical Properties

CAS No. : 1196119-03-5
 Formula: C₂₇H₂₉N₃O₃
 Molecular Weight: 443.54
 Storage: Powder: -20°C for 3 years | In solvent: -80°C for 1 year
Actual storage temperature shall be subject to the COA.



Biological Description

Description	NCL1, a phenylcyclopropylamine (PCPA)-based Lysine-specific demethylase 1 (LSD1) inhibitor, selectively inhibits LSD1 over LSD2, with IC ₅₀ values of 2.5 μM for LSD1 and 26 μM for LSD2 [1].
Targets(IC ₅₀)	Histone Demethylase

Preparing Stock Solutions

	1mg	5mg	10mg
1 mM	2.2546 mL	11.2729 mL	22.5459 mL
5 mM	0.4509 mL	2.2546 mL	4.5092 mL
10 mM	0.2255 mL	1.1273 mL	2.2546 mL
50 mM	0.0451 mL	0.2255 mL	0.4509 mL

Please select the appropriate solvent to prepare the stock solution, according to the solubility of the product in different solvents. Please use it as soon as possible.

Note: The dilution table applies only to solid products. For liquid products, please calculate the stock solution based on the stated concentration and/or density.

Inhibitor · Natural Compounds · Compound Libraries · Recombinant Proteins

This product is for Research Use Only · Not for Human or Veterinary or Therapeutic Use

Tel: 781-999-4286 E_mail: info@targetmol.com Address: 34 Washington Street, Wellesley Hills, MA 02481