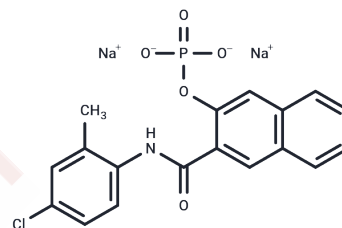


Naphthol AS-TR phosphate disodium

Chemical Properties

CAS No. :	4264-93-1
Formula:	C ₁₈ H ₁₃ ClNNa ₂ O ₅ P
Molecular Weight:	435.71
Storage:	Keep away from direct sunlight Store at -20°C <small>Actual storage temperature shall be subject to the COA.</small>



Biological Description

Description	Naphthol AS-TR phosphate disodium is a water-soluble chromogenic dye widely employed as an enzymatic substrate for detecting alkaline phosphatase activity, as it undergoes enzymatic hydrolysis to yield a measurable colored product, enabling sensitive spectrophotometric monitoring of enzyme activity in biological samples such as serum or urine for diagnostic and biochemical assay applications.
Targets(IC50)	Others

Solubility Information

Solubility	H ₂ O: 80 mg/mL (183.61 mM),Sonication is recommended. DMSO: 40 mg/mL (91.8 mM),Sonication is recommended. (< 1 mg/ml refers to the product slightly soluble or insoluble)
------------	---

Preparing Stock Solutions

	1mg	5mg	10mg
1 mM	2.2951 mL	11.4755 mL	22.951 mL
5 mM	0.459 mL	2.2951 mL	4.5902 mL
10 mM	0.2295 mL	1.1476 mL	2.2951 mL
50 mM	0.0459 mL	0.2295 mL	0.459 mL

Please select the appropriate solvent to prepare the stock solution, according to the solubility of the product in different solvents. Please use it as soon as possible.

Note: The dilution table applies only to solid products. For liquid products, please calculate the stock solution based on the stated concentration and/or density.

Reference

V Souvannavong, et al. Expression of alkaline phosphatase by a B-cell hybridoma and its modulation during cell growth and apoptosis, Immunol Lett. 1995 Sep;47(3):163-70.

Inhibitor · Natural Compounds · Compound Libraries · Recombinant Proteins

This product is for Research Use Only · Not for Human or Veterinary or Therapeutic Use

Tel:781-999-4286 E_mail:info@targetmol.com Address:34 Washington Street,Wellesley Hills,MA 02481