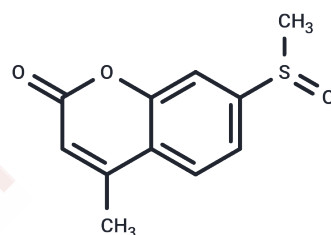


Msr-blue

Chemical Properties

CAS No. :	2966537-39-1
Formula:	C ₁₁ H ₁₀ O ₃ S
Molecular Weight:	222.26
Storage:	Powder: -20°C for 3 years In solvent: -80°C for 1 year Actual storage temperature shall be subject to the COA.



Biological Description

Description	Msr-blue, a first turn-on fluorescent probe for methionine sulfoxide reductase, exhibits a more than 100-fold fluorescence increment and is used to monitor enzyme activity in live cells (λ_{ex} =340 nm, λ_{em} =440 nm) [1].
Targets(IC50)	Others
In vitro	Msr-blue emits blue fluorescence after activation by methionine sulfoxide reductase A (Msr A). Msr-blue responds to Msr A in both a time- and dose-dependent manner, with more than a 100-fold increase in emission observed. It is converted to its corresponding sulfide (15') under catalysis by either purified Msr A or a cell lysate [1]. In a 6-OHDA-treated PC12 cellular model of Parkinson's disease (PD), Msr-blue was employed to probe Msrs function. Using Msr-blue, a decline in Msr activity in the PD model was disclosed for the first time [1].

Preparing Stock Solutions

	1mg	5mg	10mg
1 mM	4.4992 mL	22.4962 mL	44.9924 mL
5 mM	0.8998 mL	4.4992 mL	8.9985 mL
10 mM	0.4499 mL	2.2496 mL	4.4992 mL
50 mM	0.090 mL	0.4499 mL	0.8998 mL

Please select the appropriate solvent to prepare the stock solution, according to the solubility of the product in different solvents. Please use it as soon as possible.

Note: The dilution table applies only to solid products. For liquid products, please calculate the stock solution based on the stated concentration and/or density.

Inhibitor · Natural Compounds · Compound Libraries · Recombinant Proteins

This product is for Research Use Only · Not for Human or Veterinary or Therapeutic Use

Tel:781-999-4286 E_mail:info@targetmol.com Address:34 Washington Street,Wellesley Hills,MA 02481