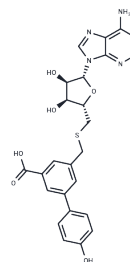


## METTL1-WDR4-IN-2

## Chemical Properties

CAS No. :	2919742-07-5
Formula:	C <sub>24</sub> H <sub>23</sub> N <sub>5</sub> O <sub>6</sub> S
Molecular Weight:	509.53
Storage:	Powder: -20°C for 3 years   In solvent: -80°C for 1 year Actual storage temperature shall be subject to the COA.



## Biological Description

Description	METTL1-WDR4-IN-2 (compound 6) is a selective methyltransferase Like 1 (METTL1)-WDR4 inhibitor with an IC <sub>50</sub> of 41 μM, showing remarkable selectivity against METTL3-14 and slight selectivity against METTL16 [1].
Targets(IC <sub>50</sub> )	DNA Methyltransferase

## Preparing Stock Solutions

	1mg	5mg	10mg
1 mM	1.9626 mL	9.813 mL	19.6259 mL
5 mM	0.3925 mL	1.9626 mL	3.9252 mL
10 mM	0.1963 mL	0.9813 mL	1.9626 mL
50 mM	0.0393 mL	0.1963 mL	0.3925 mL

Please select the appropriate solvent to prepare the stock solution, according to the solubility of the product in different solvents. Please use it as soon as possible.

Note: The dilution table applies only to solid products. For liquid products, please calculate the stock solution based on the stated concentration and/or density.

Inhibitor · Natural Compounds · Compound Libraries · Recombinant Proteins

This product is for Research Use Only · Not for Human or Veterinary or Therapeutic Use

Tel: 781-999-4286 E\_mail: info@targetmol.com Address: 34 Washington Street, Wellesley Hills, MA 02481