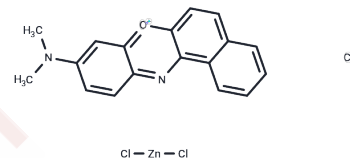


## Meldola blue

## Chemical Properties

CAS No. :	7057-57-0
Formula:	C <sub>18</sub> H <sub>15</sub> Cl <sub>3</sub> N <sub>2</sub> OZn
Molecular Weight:	447.06
Storage:	Powder: -20°C for 3 years   In solvent: -80°C for 1 year Actual storage temperature shall be subject to the COA.



## Biological Description

Description	Meldola blue serves as a biosensor for measuring lactate in serum, utilizing screen-printed carbon electrodes modified with Meldola's Blue-Reinecke salt (MBRS-SPCE) and coated with lactate dehydrogenase NAD <sup>+</sup> -dependent enzyme (from pig heart) and NAD <sup>+</sup> .
Targets(IC50)	Others

## Preparing Stock Solutions

	1mg	5mg	10mg
1 mM	2.2368 mL	11.1842 mL	22.3684 mL
5 mM	0.4474 mL	2.2368 mL	4.4737 mL
10 mM	0.2237 mL	1.1184 mL	2.2368 mL
50 mM	0.0447 mL	0.2237 mL	0.4474 mL

Please select the appropriate solvent to prepare the stock solution, according to the solubility of the product in different solvents. Please use it as soon as possible.

Note: The dilution table applies only to solid products. For liquid products, please calculate the stock solution based on the stated concentration and/or density.

Inhibitor · Natural Compounds · Compound Libraries · Recombinant Proteins

This product is for Research Use Only · Not for Human or Veterinary or Therapeutic Use

Tel:781-999-4286 E\_mail:info@targetmol.com Address:34 Washington Street,Wellesley Hills,MA 02481