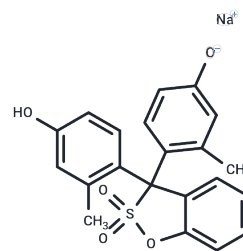


m-Cresol purple sodium

Chemical Properties

CAS No. :	62625-31-4
Formula:	C ₂₁ H ₁₇ NaO ₅ S
Molecular Weight:	404.41
Storage:	Powder: -20°C for 3 years In solvent: -80°C for 1 year Actual storage temperature shall be subject to the COA.



Biological Description

Description	m-Cresol Purple Sodium (Metacresol Purple Sodium) serves as a pH indicator that transitions from yellow to blue within the pH range of 7.5 to 9.0 [1].
Targets(IC50)	Others

Preparing Stock Solutions

	1mg	5mg	10mg
1 mM	2.4727 mL	12.3637 mL	24.7274 mL
5 mM	0.4945 mL	2.4727 mL	4.9455 mL
10 mM	0.2473 mL	1.2364 mL	2.4727 mL
50 mM	0.0495 mL	0.2473 mL	0.4945 mL

Please select the appropriate solvent to prepare the stock solution, according to the solubility of the product in different solvents. Please use it as soon as possible.

Note: The dilution table applies only to solid products. For liquid products, please calculate the stock solution based on the stated concentration and/or density.

Inhibitor · Natural Compounds · Compound Libraries · Recombinant Proteins

This product is for Research Use Only · Not for Human or Veterinary or Therapeutic Use

Tel: 781-999-4286 E_mail: info@targetmol.com Address: 34 Washington Street, Wellesley Hills, MA 02481