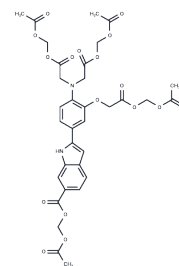


Mag-indo-1/AM

Chemical Properties

CAS No. :	130926-94-2
Formula:	C ₃₃ H ₃₄ N ₂ O ₁₇
Molecular Weight:	730.63
Storage:	Powder: -20°C for 3 years In solvent: -80°C for 1 year Actual storage temperature shall be subject to the COA.



Biological Description

Description	Mag-indo-1/AM, a cell-permeable fluorescent indicator for Mg ²⁺ and Ca ²⁺ (Ex=340-390 nm, Em=410-490 nm), is used to determine intracellular Mg ²⁺ and Ca ²⁺ concentrations [1][2].
Targets(IC50)	Others
In vitro	<p>Measurement of intracellular Ca²⁺: Incubate 3 mL cell suspension with 10 μM Mag-indo-1/AM for 15 min at 30°C. Centrifuge cells for 1 min at 500 rpm, resuspend in 5 mL isolation buffer (containing 1 mM CaCl₂), add 1 mM probenecid to prevent dye leakage, and store (Mag-indo-1/AM-loaded cells) at room temperature. Incubate at room temperature for 2 h, shake gently at 37°C for 1.5 h, centrifuge, resuspend, and store at room temperature. Place a small portion of loaded cells in an experimental chamber on an inverted microscope. Measure fluorescence of Mag-indo-1/AM (Ex=340-390 nm, Em=410 and 490 nm [peak emissions of Ca²⁺ bound and free forms]) using a photon counting system.</p> <p>The above information is based on published literature. Experimental procedures should be appropriately modified to meet specific research demands.</p>

Preparing Stock Solutions

	1mg	5mg	10mg
1 mM	1.3687 mL	6.8434 mL	13.6868 mL
5 mM	0.2737 mL	1.3687 mL	2.7374 mL
10 mM	0.1369 mL	0.6843 mL	1.3687 mL
50 mM	0.0274 mL	0.1369 mL	0.2737 mL

Please select the appropriate solvent to prepare the stock solution, according to the solubility of the product in different solvents. Please use it as soon as possible.

Note: The dilution table applies only to solid products. For liquid products, please calculate the stock solution based on the stated concentration and/or density.

Inhibitor · Natural Compounds · Compound Libraries · Recombinant Proteins

This product is for Research Use Only · Not for Human or Veterinary or Therapeutic Use

Tel:781-999-4286 E_mail:info@targetmol.com Address:34 Washington Street,Wellesley Hills,MA 02481