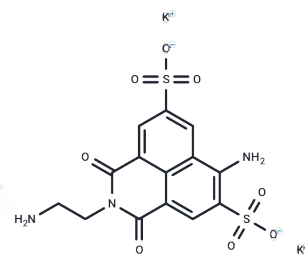


Lucifer yellow ethylenediamine

Chemical Properties

CAS No. :	161578-11-6
Formula:	C14H11K2N3O8S2
Molecular Weight:	491.58
Storage:	Powder: -20°C for 3 years In solvent: -80°C for 1 year Actual storage temperature shall be subject to the COA.



Biological Description

Description	Lucifer yellow ethylenediamine (LYen; PAsp-LY) serves as a polar tracer that readily forms Schiff bases through coupling with aldehydes and ketones. These bases can subsequently be converted into stable amine derivatives via reduction using either sodium borohydride (NaBH ₄) or sodium cyanoborohydride (NaCNBH ₃).
Targets(IC50)	Others

Preparing Stock Solutions

	1mg	5mg	10mg
1 mM	2.0343 mL	10.1713 mL	20.3426 mL
5 mM	0.4069 mL	2.0343 mL	4.0685 mL
10 mM	0.2034 mL	1.0171 mL	2.0343 mL
50 mM	0.0407 mL	0.2034 mL	0.4069 mL

Please select the appropriate solvent to prepare the stock solution, according to the solubility of the product in different solvents. Please use it as soon as possible.

Note: The dilution table applies only to solid products. For liquid products, please calculate the stock solution based on the stated concentration and/or density.

Inhibitor · Natural Compounds · Compound Libraries · Recombinant Proteins

This product is for Research Use Only · Not for Human or Veterinary or Therapeutic Use

Tel:781-999-4286 E_mail:info@targetmol.com Address:34 Washington Street,Wellesley Hills,MA 02481