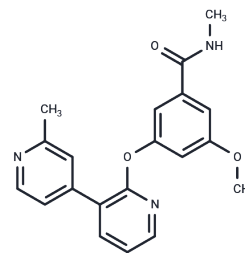


LG157

Chemical Properties

CAS No. : 2840558-89-4
 Formula: C₂₀H₁₉N₃O₃
 Molecular Weight: 349.38
 Storage: Powder: -20°C for 3 years | In solvent: -80°C for 1 year
 Actual storage temperature shall be subject to the COA.



Biological Description

| | |
|---------------|--|
| Description | LG157 is a strong inhibitor of the mitotic kinesin-like protein 2 (MKLP2) [1]. |
| Targets(IC50) | Kinesin |

Preparing Stock Solutions

| | 1mg | 5mg | 10mg |
|-------|-----------|------------|------------|
| 1 mM | 2.8622 mL | 14.3111 mL | 28.6221 mL |
| 5 mM | 0.5724 mL | 2.8622 mL | 5.7244 mL |
| 10 mM | 0.2862 mL | 1.4311 mL | 2.8622 mL |
| 50 mM | 0.0572 mL | 0.2862 mL | 0.5724 mL |

Please select the appropriate solvent to prepare the stock solution, according to the solubility of the product in different solvents. Please use it as soon as possible.

Note: The dilution table applies only to solid products. For liquid products, please calculate the stock solution based on the stated concentration and/or density.

Inhibitor · Natural Compounds · Compound Libraries · Recombinant Proteins

This product is for Research Use Only · Not for Human or Veterinary or Therapeutic Use

Tel:781-999-4286 E_mail:info@targetmol.com Address:34 Washington Street,Wellesley Hills,MA 02481