

KRES peptide

Chemical Properties

CAS No. : 867376-23-6

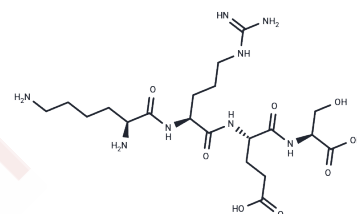
Formula: C₂₀H₃₈N₈O₈

Molecular Weight: 518.56

Keep away from moisture

Storage: Powder: -20°C for 3 years | In solvent: -80°C for 1 year

Actual storage temperature shall be subject to the COA.



Biological Description

| | |
|-------------|--|
| Description | KRES peptide, an apolipoprotein with four amino acid residues, interacts with lipids, reduces lipoprotein lipid hydroperoxides (LOOH), activates antioxidant enzymes associated with high-density lipoprotein, and exhibits anti-inflammatory and anti-atherogenic properties. KRES peptide is also orally active [1]. |
|-------------|--|

Preparing Stock Solutions

| | 1mg | 5mg | 10mg |
|-------|-----------|-----------|------------|
| 1 mM | 1.9284 mL | 9.6421 mL | 19.2842 mL |
| 5 mM | 0.3857 mL | 1.9284 mL | 3.8568 mL |
| 10 mM | 0.1928 mL | 0.9642 mL | 1.9284 mL |
| 50 mM | 0.0386 mL | 0.1928 mL | 0.3857 mL |

Please select the appropriate solvent to prepare the stock solution, according to the solubility of the product in different solvents. Please use it as soon as possible.

Note: The dilution table applies only to solid products. For liquid products, please calculate the stock solution based on the stated concentration and/or density.

Inhibitor · Natural Compounds · Compound Libraries · Recombinant Proteins

This product is for Research Use Only · Not for Human or Veterinary or Therapeutic Use

Tel:781-999-4286

E_mail:info@targetmol.com

Address:34 Washington Street,Wellesley Hills,MA 02481