

Gp100:209-217

Chemical Properties

CAS No. : 319927-23-6

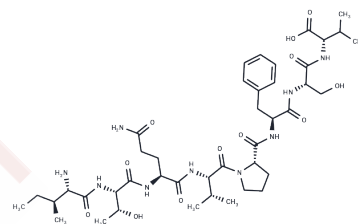
Formula: C42H67N9O12

Molecular Weight: 890.03

Keep away from moisture

Storage: Powder: -20°C for 3 years | In solvent: -80°C for 1 year

Actual storage temperature shall be subject to the COA.



Biological Description

Description

Gp100:209-217, a gp 100-derived human CTL epitope presented by HLA-A2, is an eight-amino-acid polypeptide that acts as a potent TGF- β inhibitor, blocking the TGF- β signaling pathway [1].

Preparing Stock Solutions

	1mg	5mg	10mg
1 mM	1.1236 mL	5.6178 mL	11.2356 mL
5 mM	0.2247 mL	1.1236 mL	2.2471 mL
10 mM	0.1124 mL	0.5618 mL	1.1236 mL
50 mM	0.0225 mL	0.1124 mL	0.2247 mL

Please select the appropriate solvent to prepare the stock solution, according to the solubility of the product in different solvents. Please use it as soon as possible.

Note: The dilution table applies only to solid products. For liquid products, please calculate the stock solution based on the stated concentration and/or density.

Inhibitor · Natural Compounds · Compound Libraries · Recombinant Proteins

This product is for Research Use Only · Not for Human or Veterinary or Therapeutic Use

Tel:781-999-4286 E_mail:info@targetmol.com Address:34 Washington Street,Wellesley Hills,MA 02481