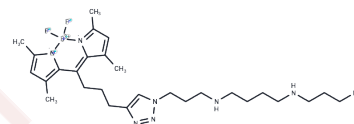


## Fluorescent polyamine probe-1

## Chemical Properties

CAS No. :	2678634-03-0
Formula:	C <sub>28</sub> H <sub>45</sub> BF <sub>2</sub> N <sub>8</sub>
Molecular Weight:	542.52
Storage:	Powder: -20°C for 3 years   In solvent: -80°C for 1 year Actual storage temperature shall be subject to the COA.



## Biological Description

Description	Fluorescent polyamine probe-1 (compound 15) is a linear polyamine probe characterized by its high uptake efficiency. It is employed in studying the transport systems into cancer cells [1].
Targets(IC50)	Others
In vitro	Fluorescent polyamine probe-1 is rapidly accumulated in cancer cells (MCF-7) but not in non-tumorigenic cells (MCF-10A) [1]. In MCF-7 cells, this probe (4 h) shows ten-fold higher uptake efficiency compared to branched probes, with intracellular accumulation observable as early as 1 h after probe addition [1].

## Preparing Stock Solutions

	1mg	5mg	10mg
1 mM	1.8433 mL	9.2163 mL	18.4325 mL
5 mM	0.3687 mL	1.8433 mL	3.6865 mL
10 mM	0.1843 mL	0.9216 mL	1.8433 mL
50 mM	0.0369 mL	0.1843 mL	0.3687 mL

Please select the appropriate solvent to prepare the stock solution, according to the solubility of the product in different solvents. Please use it as soon as possible.

Note: The dilution table applies only to solid products. For liquid products, please calculate the stock solution based on the stated concentration and/or density.

Inhibitor · Natural Compounds · Compound Libraries · Recombinant Proteins

This product is for Research Use Only · Not for Human or Veterinary or Therapeutic Use

Tel:781-999-4286 E\_mail:info@targetmol.com Address:34 Washington Street,Wellesley Hills,MA 02481