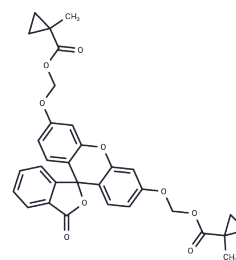


Fluorescein-CM2

Chemical Properties

CAS No. :	1394821-44-3
Formula:	C32H28O9
Molecular Weight:	556.56
Storage:	Powder: -20°C for 3 years In solvent: -80°C for 1 year Actual storage temperature shall be subject to the COA.



Biological Description

Description	Fluorescein-CM2 is a fluorogenic compound employed to swiftly screen esterase cleavage sites for protein-protein interaction-dependent (PPI-dependent) esterase activity in E. coli [1].
Targets(IC50)	Others

Preparing Stock Solutions

	1mg	5mg	10mg
1 mM	1.7968 mL	8.9838 mL	17.9675 mL
5 mM	0.3594 mL	1.7968 mL	3.5935 mL
10 mM	0.1797 mL	0.8984 mL	1.7968 mL
50 mM	0.0359 mL	0.1797 mL	0.3594 mL

Please select the appropriate solvent to prepare the stock solution, according to the solubility of the product in different solvents. Please use it as soon as possible.

Note: The dilution table applies only to solid products. For liquid products, please calculate the stock solution based on the stated concentration and/or density.

Inhibitor · Natural Compounds · Compound Libraries · Recombinant Proteins

This product is for Research Use Only · Not for Human or Veterinary or Therapeutic Use

Tel:781-999-4286 E_mail:info@targetmol.com Address:34 Washington Street,Wellesley Hills,MA 02481