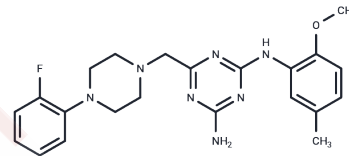


Fluopipamine

Chemical Properties

CAS No. :	885902-66-9
Formula:	C ₂₂ H ₂₆ N ₇ O
Molecular Weight:	423.49
Storage:	Powder: -20°C for 3 years In solvent: -80°C for 1 year Actual storage temperature shall be subject to the COA.



Biological Description

Description	Fluopipamine, an antagonist of Cellulose Synthase 1 (CESA1) with an IC ₅₀ of 0.78 μM, reduces glucose uptake into cellulose and causes hyperaccumulation of CESAs at the PM in etiolated Arabidopsis seedlings [1].
Targets(IC ₅₀)	Others, glycosidase

Preparing Stock Solutions

	1mg	5mg	10mg
1 mM	2.3613 mL	11.8067 mL	23.6133 mL
5 mM	0.4723 mL	2.3613 mL	4.7227 mL
10 mM	0.2361 mL	1.1807 mL	2.3613 mL
50 mM	0.0472 mL	0.2361 mL	0.4723 mL

Please select the appropriate solvent to prepare the stock solution, according to the solubility of the product in different solvents. Please use it as soon as possible.

Note: The dilution table applies only to solid products. For liquid products, please calculate the stock solution based on the stated concentration and/or density.

Inhibitor · Natural Compounds · Compound Libraries · Recombinant Proteins

This product is for Research Use Only · Not for Human or Veterinary or Therapeutic Use

Tel: 781-999-4286 E_mail: info@targetmol.com Address: 34 Washington Street, Wellesley Hills, MA 02481