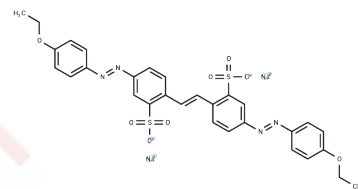


Chrysophenine

Chemical Properties

CAS No. :	2870-32-8
Formula:	C ₃₀ H ₂₆ N ₄ Na ₂ O ₈ S ₂
Molecular Weight:	680.66
Storage:	Powder: -20°C for 3 years In solvent: -80°C for 1 year Actual storage temperature shall be subject to the COA.



Biological Description

Description	Chrysophenine CI Direct Black 80 is an azo dye.
Targets(IC50)	Others

Preparing Stock Solutions

	1mg	5mg	10mg
1 mM	1.4692 mL	7.3458 mL	14.6916 mL
5 mM	0.2938 mL	1.4692 mL	2.9383 mL
10 mM	0.1469 mL	0.7346 mL	1.4692 mL
50 mM	0.0294 mL	0.1469 mL	0.2938 mL

Please select the appropriate solvent to prepare the stock solution, according to the solubility of the product in different solvents. Please use it as soon as possible.

Note: The dilution table applies only to solid products. For liquid products, please calculate the stock solution based on the stated concentration and/or density.

Inhibitor · Natural Compounds · Compound Libraries · Recombinant Proteins

This product is for Research Use Only · Not for Human or Veterinary or Therapeutic Use

Tel:781-999-4286 E_mail:info@targetmol.com Address:34 Washington Street,Wellesley Hills,MA 02481