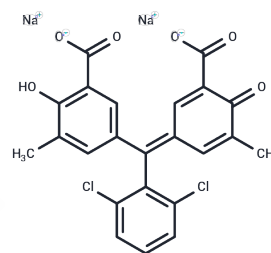


## Chrome Pure Blue BX

## Chemical Properties

|                   |   |
|-------------------|---|
| CAS No. :         | 1796-92-5   |
| Formula:          | C <sub>23</sub> H <sub>14</sub> Cl <sub>2</sub> Na <sub>2</sub> O <sub>6</sub>                                      |
| Molecular Weight: | 503.24  |
| Storage:          | Powder: -20°C for 3 years   In solvent: -80°C for 1 year<br>Actual storage temperature shall be subject to the COA. |



## Biological Description

|               |   |
|---------------|---|
| Description   | Chrome Pure Blue BX (Sunchromine Pure Blue BX) serves as a versatile dye with numerous applications in both conventional and emerging sectors. Critical for biological experiments, this dye facilitates the observation and analysis of cell structures, tracking of biomolecules, evaluation of cell functions, differentiation of cell types, detection of biomolecules, tissue pathology studies, and microorganism monitoring. Beyond its scientific use, Chrome Pure Blue BX is extensively utilized in traditional textile dyeing, and cutting-edge areas like functional textile processing, food pigments, and dye-sensitized solar cells, spanning from basic research to clinical diagnostics. |
| Targets(IC50) | Others  |

## Preparing Stock Solutions

|       | 1mg       | 5mg       | 10mg       |
|-------|-----------|-----------|------------|
| 1 mM  | 1.9871 mL | 9.9356 mL | 19.8712 mL |
| 5 mM  | 0.3974 mL | 1.9871 mL | 3.9742 mL  |
| 10 mM | 0.1987 mL | 0.9936 mL | 1.9871 mL  |
| 50 mM | 0.0397 mL | 0.1987 mL | 0.3974 mL  |

Please select the appropriate solvent to prepare the stock solution, according to the solubility of the product in different solvents. Please use it as soon as possible.

Note: The dilution table applies only to solid products. For liquid products, please calculate the stock solution based on the stated concentration and/or density.

**Inhibitor · Natural Compounds · Compound Libraries · Recombinant Proteins**

This product is for Research Use Only · Not for Human or Veterinary or Therapeutic Use

Tel:781-999-4286 E\_mail:info@targetmol.com Address:34 Washington Street,Wellesley Hills,MA 02481