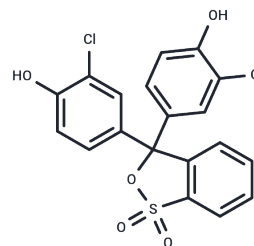


## Chlorophenol red

## Chemical Properties

|                   |   |
|-------------------|---|
| CAS No. :         | 4430-20-0   |
| Formula:          | C <sub>19</sub> H <sub>12</sub> Cl <sub>2</sub> O <sub>5</sub> S  |
| Molecular Weight: | 423.27  |
| Storage:          | Powder: -20°C for 3 years   In solvent: -80°C for 1 year<br>Actual storage temperature shall be subject to the COA. |



## Biological Description

|               |   |
|---------------|---|
| Description   | Chlorophenol red (Dichlorophenolsulphonephthalein) serves as a multifunctional dye with extensive applications in both scientific and industrial sectors. Within biological experiments, it facilitates the observation and analysis of cell structures, aids in tracking biomolecules, evaluating cell functions, distinguishing cell types, detecting biomolecules, studying tissue pathology, and monitoring microorganisms. Its uses extend beyond basic research to include clinical diagnostics. Furthermore, Chlorophenol red is employed in traditional industries like textile dyeing and emerging sectors such as functional textile processing, food pigments, and dye-sensitized solar cells. |
| Targets(IC50) | Others  |

## Preparing Stock Solutions

|       | 1mg       | 5mg        | 10mg       |
|-------|-----------|------------|------------|
| 1 mM  | 2.3626 mL | 11.8128 mL | 23.6256 mL |
| 5 mM  | 0.4725 mL | 2.3626 mL  | 4.7251 mL  |
| 10 mM | 0.2363 mL | 1.1813 mL  | 2.3626 mL  |
| 50 mM | 0.0473 mL | 0.2363 mL  | 0.4725 mL  |

Please select the appropriate solvent to prepare the stock solution, according to the solubility of the product in different solvents. Please use it as soon as possible.

Note: The dilution table applies only to solid products. For liquid products, please calculate the stock solution based on the stated concentration and/or density.

**Inhibitor · Natural Compounds · Compound Libraries · Recombinant Proteins**

This product is for Research Use Only · Not for Human or Veterinary or Therapeutic Use

Tel:781-999-4286 E\_mail:info@targetmol.com Address:34 Washington Street,Wellesley Hills,MA 02481