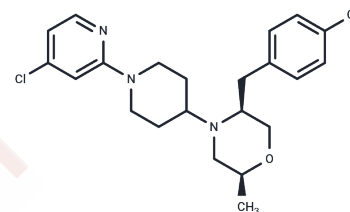


CHI3L1-IN-1

Chemical Properties

CAS No. :	2982256-78-8
Formula:	C ₂₂ H ₂₇ Cl ₂ N ₃ O
Molecular Weight:	420.38
Storage:	Powder: -20°C for 3 years In solvent: -80°C for 1 year Actual storage temperature shall be subject to the COA.



Biological Description

Description	CHI3L1-IN-1 (Compound 30), a potent inhibitor of Chitinase-3-like protein 1 (CHI3L1) (YKL-40), exhibits an IC ₅₀ of 50 nM. Additionally, this compound displays inhibitory activity against the hERG channel with an IC ₅₀ of 2.3 μM [1].
Targets(IC ₅₀)	Others, glycosidase, Potassium Channel
In vivo	Administered intravenously at a dose of 3 mg/kg, CHI3L1-IN-1 exhibits a clearance rate of 24 mL/min/kg and a bioavailability of 18% in BALB/c mice [1].

Preparing Stock Solutions

	1mg	5mg	10mg
1 mM	2.3788 mL	11.894 mL	23.788 mL
5 mM	0.4758 mL	2.3788 mL	4.7576 mL
10 mM	0.2379 mL	1.1894 mL	2.3788 mL
50 mM	0.0476 mL	0.2379 mL	0.4758 mL

Please select the appropriate solvent to prepare the stock solution, according to the solubility of the product in different solvents. Please use it as soon as possible.

Note: The dilution table applies only to solid products. For liquid products, please calculate the stock solution based on the stated concentration and/or density.

Inhibitor · Natural Compounds · Compound Libraries · Recombinant Proteins

This product is for Research Use Only · Not for Human or Veterinary or Therapeutic Use

Tel: 781-999-4286 E_mail: info@targetmol.com Address: 34 Washington Street, Wellesley Hills, MA 02481