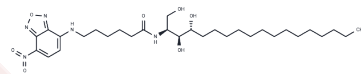


C6 NBD Phytoceramide

Chemical Properties

CAS No. :	114301-99-4
Formula:	C ₃₀ H ₅₁ N ₅ O ₇
Molecular Weight:	593.76
Storage:	Powder: -20°C for 3 years In solvent: -80°C for 1 year Actual storage temperature shall be subject to the COA.



Biological Description

Description	C6 NBD Phytoceramide, a fluorescently labeled short-chain ceramide analog, is recognized by mammalian GlcCer synthase (GCS) [1].
Targets(IC50)	Others

Preparing Stock Solutions

	1mg	5mg	10mg
1 mM	1.6842 mL	8.4209 mL	16.8418 mL
5 mM	0.3368 mL	1.6842 mL	3.3684 mL
10 mM	0.1684 mL	0.8421 mL	1.6842 mL
50 mM	0.0337 mL	0.1684 mL	0.3368 mL

Please select the appropriate solvent to prepare the stock solution, according to the solubility of the product in different solvents. Please use it as soon as possible.

Note: The dilution table applies only to solid products. For liquid products, please calculate the stock solution based on the stated concentration and/or density.

Inhibitor · Natural Compounds · Compound Libraries · Recombinant Proteins

This product is for Research Use Only · Not for Human or Veterinary or Therapeutic Use

Tel:781-999-4286 E_mail:info@targetmol.com Address:34 Washington Street,Wellesley Hills,MA 02481