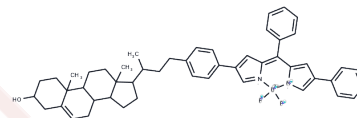


BODIPY-cholesterol conjugate-2

Chemical Properties

CAS No. :	1638745-26-2
Formula:	C50H55BF2N2O
Molecular Weight:	748.79
Storage:	Powder: -20°C for 3 years In solvent: -80°C for 1 year Actual storage temperature shall be subject to the COA.



Biological Description

Description	BODIPY-cholesterol conjugate-2 (compound 6), a BODIPY-cholesterol conjugate, serves as an efficient probe for the simultaneous visualization of intracellular cholesterol pools and monitoring cholesterol efflux from cells to extracellular acceptors. ($\lambda_{ex}=589$ nm, $\lambda_{em}=638$ nm) [1].
Targets(IC50)	Others

Preparing Stock Solutions

	1mg	5mg	10mg
1 mM	1.3355 mL	6.6774 mL	13.3549 mL
5 mM	0.2671 mL	1.3355 mL	2.671 mL
10 mM	0.1335 mL	0.6677 mL	1.3355 mL
50 mM	0.0267 mL	0.1335 mL	0.2671 mL

Please select the appropriate solvent to prepare the stock solution, according to the solubility of the product in different solvents. Please use it as soon as possible.

Note: The dilution table applies only to solid products. For liquid products, please calculate the stock solution based on the stated concentration and/or density.

Inhibitor · Natural Compounds · Compound Libraries · Recombinant Proteins

This product is for Research Use Only · Not for Human or Veterinary or Therapeutic Use

Tel:781-999-4286 E_mail:info@targetmol.com Address:34 Washington Street,Wellesley Hills,MA 02481