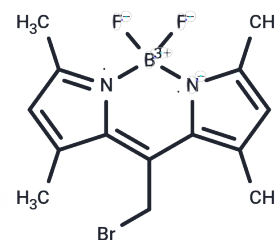


BODIPY 493/503 methyl bromide

Chemical Properties

CAS No. :	216434-81-0
Formula:	C ₁₄ H ₁₆ BBrF ₂ N ₂
Molecular Weight:	341
Storage:	Powder: -20°C for 3 years In solvent: -80°C for 1 year <i>Actual storage temperature shall be subject to the COA.</i>



Biological Description

Description	BODIPY493/503 methyl bromide, a BODIPY dye, is a small molecule with strong ultraviolet absorption, a sharp fluorescence peak, and high quantum yield. It exhibits relative insensitivity to environmental polarity and pH while maintaining stability under various physiological conditions. The structural asymmetry of BODIPY allows for diverse structural derivatives. BODIPY lipid droplet dyes effectively permeate the cell membrane, localize polar lipids, and specifically stain lipid droplets, making them suitable for labeling both live and fixed cells [1]. Maximum excitation/emission wavelength: 493/503 nm [1].
Targets(IC50)	Others
In vitro	<p>BODIPY493/503 methyl bromide: Usage Instructions</p> <ol style="list-style-type: none"> Preparation of BODIPY493/503 Methyl Bromide Stock Solution <ol style="list-style-type: none"> 1.1 Prepare a stock solution by dissolving 1 mg of BODIPY493/503 methyl bromide with 293.3 μL anhydrous DMSO to achieve a concentration of 10 mM. Note: It is recommended to aliquot the stock solution and store it protected from light at -20°C or -80°C. 1.2 Preparation of Working Solution Dilute the stock solution with pre-warmed serum-free cell culture medium or PBS to prepare a BODIPY493/503 methyl bromide working solution at a concentration of 1-10 μM. Note: Adjust the working solution concentration as needed and prepare fresh immediately before use. Cell Staining (Suspension Cells) <ol style="list-style-type: none"> 2.1 Centrifuge to collect the cells, wash twice with PBS for 5 minutes each time. Maintain cell density at 1×10^6/mL. 2.2 Add 1 mL of BODIPY493/503 methyl bromide working solution and incubate at room temperature for 5-30 minutes. 2.3 Centrifuge at 400g for 3-4 minutes and discard the supernatant. 2.4 Wash cells twice with PBS for 5 minutes each time. 2.5 Resuspend cells with 1 mL of serum-free medium or PBS, then observe using a fluorescence microscope or flow cytometer. Cell Staining (Adherent Cells)

In vitro	<p>3.1 Culture adherent cells on sterile coverslips. 3.2 Remove coverslips from culture medium and aspirate excess medium. 3.3 Add 100 μL of dye working solution, gently agitate to cover cells completely, and incubate for 5-30 minutes. 3.4 Aspirate the dye working solution and wash cells 2-3 times with medium for 5 minutes each before observation using a fluorescence microscope or flow cytometer.</p> <p>Storage Conditions Store at -20°C, protected from light for up to one year.</p> <p>Precautions 1. Adjust BODIPY493/503 methyl bromide working solution concentration and incubation time as necessary. 2. A positive control is recommended; incubate control cells with 30 μM oleic acid for 8 hours before proceeding with experiments. 3. This product is intended for scientific research by professionals only and is not suitable for clinical diagnosis, treatment, food, or drug use. 4. For your safety and health, wear lab coats and disposable gloves during handling.</p> <p>The above information is based on published literature. Experimental procedures should be appropriately modified to meet specific research demands.</p>
----------	--

Preparing Stock Solutions

	1mg	5mg	10mg
1 mM	2.9326 mL	14.6628 mL	29.3255 mL
5 mM	0.5865 mL	2.9326 mL	5.8651 mL
10 mM	0.2933 mL	1.4663 mL	2.9326 mL
50 mM	0.0587 mL	0.2933 mL	0.5865 mL

Please select the appropriate solvent to prepare the stock solution, according to the solubility of the product in different solvents. Please use it as soon as possible.

Note: The dilution table applies only to solid products. For liquid products, please calculate the stock solution based on the stated concentration and/or density.

Inhibitor · Natural Compounds · Compound Libraries · Recombinant Proteins

This product is for Research Use Only · Not for Human or Veterinary or Therapeutic Use

Tel:781-999-4286 E_mail:info@targetmol.com Address:34 Washington Street,Wellesley Hills,MA 02481