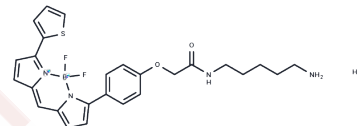


## BODIPY TR Cadaverine

## Chemical Properties

CAS No. :	217190-24-4
Formula:	C <sub>26</sub> H <sub>28</sub> BClF <sub>2</sub> N <sub>4</sub> O <sub>2</sub> S
Molecular Weight:	544.85
Storage:	Powder: -20°C for 3 years   In solvent: -80°C for 1 year Actual storage temperature shall be subject to the COA.



## Biological Description

Description	BODIPY TR Cadaverine, a derivative of cadaverine, is a red fluorescent dye used in a highly sensitive and robust fluorescent displacement assay. It binds strongly to native LPS, specifically recognizing lipid A, and is competitively displaced by compounds that have an affinity for lipid A [1] [2].
Targets(IC50)	Others
In vitro	BODIPY TR Cadaverine assay [1] involves quantifying autophagy in cells by incubating them with 125 nM of the compound for 10 minutes. After incubation, the cells are washed four times with PBS and lysed using a buffer containing 10 mM Tris-Cl pH 8 and 0.1% Triton X-100. Fluorescence measurements are then taken with a SPECTRAMax fluorimeter (Molecular Devices) at excitation and emission wavelengths of 588 nm and 616 nm, respectively. To normalize fluorescence levels relative to cell number, 0.2 mM ethidium bromide is added, and DNA fluorescence is read at an excitation wavelength of 530 nm and emission wavelength of 590 nm [1].

## Preparing Stock Solutions

	1mg	5mg	10mg
1 mM	1.8354 mL	9.1768 mL	18.3537 mL
5 mM	0.3671 mL	1.8354 mL	3.6707 mL
10 mM	0.1835 mL	0.9177 mL	1.8354 mL
50 mM	0.0367 mL	0.1835 mL	0.3671 mL

Please select the appropriate solvent to prepare the stock solution, according to the solubility of the product in different solvents. Please use it as soon as possible.

Note: The dilution table applies only to solid products. For liquid products, please calculate the stock solution based on the stated concentration and/or density.

**Inhibitor · Natural Compounds · Compound Libraries · Recombinant Proteins**

This product is for Research Use Only · Not for Human or Veterinary or Therapeutic Use

Tel:781-999-4286 E\_mail:info@targetmol.com Address:34 Washington Street,Wellesley Hills,MA 02481