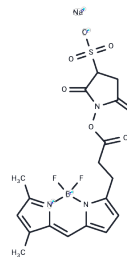


## BODIPY FL SSE

## Chemical Properties

CAS No. :	217190-17-5
Formula:	C <sub>18</sub> H <sub>17</sub> BF <sub>2</sub> N <sub>3</sub> NaO <sub>7</sub> S
Molecular Weight:	491.21
Storage:	Powder: -20°C for 3 years   In solvent: -80°C for 1 year Actual storage temperature shall be subject to the COA.



## Biological Description

Description	BODIPY FL SSE is a powerful fluorescent dye employed to label primary amines (R-NH <sub>2</sub> ) in proteins, amine-modified oligonucleotides, and other amine-containing molecules. It interacts with primary amines on biomolecules to produce green fluorescence, with excitation and emission wavelengths of 502 nm and 511 nm, respectively [1] [2].
Targets(IC50)	Others

## Preparing Stock Solutions

	1mg	5mg	10mg
1 mM	2.0358 mL	10.1789 mL	20.3579 mL
5 mM	0.4072 mL	2.0358 mL	4.0716 mL
10 mM	0.2036 mL	1.0179 mL	2.0358 mL
50 mM	0.0407 mL	0.2036 mL	0.4072 mL

Please select the appropriate solvent to prepare the stock solution, according to the solubility of the product in different solvents. Please use it as soon as possible.

Note: The dilution table applies only to solid products. For liquid products, please calculate the stock solution based on the stated concentration and/or density.

Inhibitor · Natural Compounds · Compound Libraries · Recombinant Proteins

This product is for Research Use Only · Not for Human or Veterinary or Therapeutic Use

Tel:781-999-4286 E\_mail:info@targetmol.com Address:34 Washington Street,Wellesley Hills,MA 02481