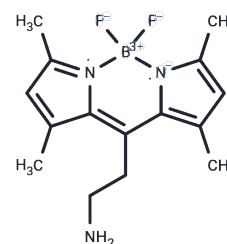


BODIPY FL Ethylamine

Chemical Properties

CAS No. :	1229571-00-9
Formula:	C ₁₅ H ₂₀ BF ₂ N ₃
Molecular Weight:	291.15
Storage:	Powder: -20°C for 3 years In solvent: -80°C for 1 year Actual storage temperature shall be subject to the COA.



Biological Description

Description	BODIPY FL Ethylamine, a fluorescent dye, forms a reversible Schiff base when it reacts with aldehydes or ketones. This compound can be converted into a stable amine derivative through reduction with either sodium borohydride or sodium cyanoborohydride [1].
Targets(IC50)	Others

Preparing Stock Solutions

	1mg	5mg	10mg
1 mM	3.4347 mL	17.1733 mL	34.3466 mL
5 mM	0.6869 mL	3.4347 mL	6.8693 mL
10 mM	0.3435 mL	1.7173 mL	3.4347 mL
50 mM	0.0687 mL	0.3435 mL	0.6869 mL

Please select the appropriate solvent to prepare the stock solution, according to the solubility of the product in different solvents. Please use it as soon as possible.

Note: The dilution table applies only to solid products. For liquid products, please calculate the stock solution based on the stated concentration and/or density.

Inhibitor · Natural Compounds · Compound Libraries · Recombinant Proteins

This product is for Research Use Only · Not for Human or Veterinary or Therapeutic Use

Tel:781-999-4286 E_mail:info@targetmol.com Address:34 Washington Street,Wellesley Hills,MA 02481