

Benzosceptrin C

Chemical Properties

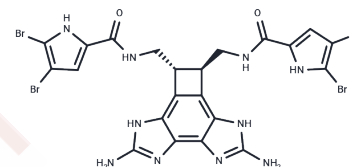
CAS No. : 1204605-36-6

Formula: C₂₂H₁₈Br₄N₁₀O₂

Molecular Weight: 774.06

Storage: Powder: -20°C for 3 years | In solvent: -80°C for 1 year

Actual storage temperature shall be subject to the COA.



Biological Description

Description	Benzosceptrin C is a PD-L1 inhibitor that promotes the degradation of programmed cell death ligand (PD-L1) via a lysosomal pathway, enhances T-cell cytotoxicity, and demonstrates antitumor activity [1].
Targets(IC50)	Apoptosis,PD-1/PD-L1
In vitro	Benzosceptrin C (0-10 μ M) inhibits PD-L1 expression in CRC cancer cells, thereby enhancing T cell cytotoxicity by disrupting the PD-L1 checkpoint, and impedes the proliferation of CRC cancer cells RKO and HCT116. It promotes lysosomal degradation of PD-L1 by blocking its palmitoylation through the inhibition of DHHC3 activity, which prevents the direct interaction between PD-L1 and PD-1, exerting an immune antitumor effect [1]. In a Cell Proliferation Assay with a concentration of 0-10 μ M over 24 days, it demonstrated a dose-dependent inhibition of tumor cell proliferation. Western Blot Analysis showed reduced PD-L1 levels in RKO and HCT116 cells in a time- and dose-dependent manner after 24 hours [1].
In vivo	Benzosceptrin C, administered at 5-50 mg/kg/day via intraperitoneal injection for 16 days, suppresses tumor growth in MC38 xenograft C57BL/6 mice by activating tumor-infiltrating T cells and inducing apoptosis. [1] Animal Model: MC38 xenograft C57BL/6 mice [1] Dosage: 5-50 mg/kg Administration: i.p., Once a day for 16 days Result: Tumor growth inhibition (TGI) of 30.4% and 43.1% was observed at doses of 25 and 50 mg/kg, respectively, with the presence of T cells.

Preparing Stock Solutions

	1mg	5mg	10mg
1 mM	1.2919 mL	6.4594 mL	12.9189 mL
5 mM	0.2584 mL	1.2919 mL	2.5838 mL
10 mM	0.1292 mL	0.6459 mL	1.2919 mL
50 mM	0.0258 mL	0.1292 mL	0.2584 mL

Please select the appropriate solvent to prepare the stock solution, according to the solubility of the product in different solvents. Please use it as soon as possible.

Note: The dilution table applies only to solid products. For liquid products, please calculate the stock solution based on the stated concentration and/or density.

Inhibitor · Natural Compounds · Compound Libraries · Recombinant Proteins

This product is for Research Use Only · Not for Human or Veterinary or Therapeutic Use

Tel:781-999-4286 E_mail:info@targetmol.com Address:34 Washington Street,Wellesley Hills,MA 02481