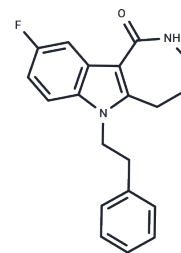


BChE-IN-23

Chemical Properties

CAS No. :	2020357-32-6
Formula:	C ₂₀ H ₁₉ FN ₂ O
Molecular Weight:	322.38
Storage:	Powder: -20°C for 3 years In solvent: -80°C for 1 year Actual storage temperature shall be subject to the COA.



Biological Description

Description	BChE-IN-23 (compound 2a), with an IC ₅₀ of 21 nM, functions as an inhibitor of BChE and is applicable in Alzheimer's disease (AD) research [1].
Targets(IC ₅₀)	Cholinesterase (ChE)

Preparing Stock Solutions

	1mg	5mg	10mg
1 mM	3.1019 mL	15.5096 mL	31.0193 mL
5 mM	0.6204 mL	3.1019 mL	6.2039 mL
10 mM	0.3102 mL	1.551 mL	3.1019 mL
50 mM	0.062 mL	0.3102 mL	0.6204 mL

Please select the appropriate solvent to prepare the stock solution, according to the solubility of the product in different solvents. Please use it as soon as possible.

Note: The dilution table applies only to solid products. For liquid products, please calculate the stock solution based on the stated concentration and/or density.

Inhibitor · Natural Compounds · Compound Libraries · Recombinant Proteins

This product is for Research Use Only · Not for Human or Veterinary or Therapeutic Use

Tel: 781-999-4286 E_mail: info@targetmol.com Address: 34 Washington Street, Wellesley Hills, MA 02481