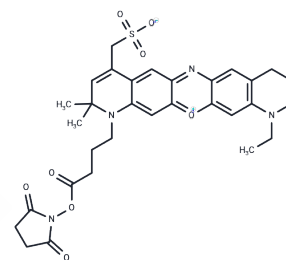


ATTO 680 NHS ester

Chemical Properties

CAS No. : 1537182-26-5
 Formula: C₃₁H₃₄N₄O₈S
 Molecular Weight: 622.69
 Storage: Powder: -20°C for 3 years | In solvent: -80°C for 1 year
Actual storage temperature shall be subject to the COA.



Biological Description

Description	ATTO 680 NHS ester, a new fluorescent marker based on the Rhodamine structure, features strong absorption, high fluorescence quantum yield, excellent thermal and photochemical stability, making it ideal for single molecule detection and high-resolution microscopy. This NHS ester derivative of ATTO 680 is suitable for labeling proteins or antibodies.
Targets(IC50)	Others

Preparing Stock Solutions

	1mg	5mg	10mg
1 mM	1.6059 mL	8.0297 mL	16.0594 mL
5 mM	0.3212 mL	1.6059 mL	3.2119 mL
10 mM	0.1606 mL	0.803 mL	1.6059 mL
50 mM	0.0321 mL	0.1606 mL	0.3212 mL

Please select the appropriate solvent to prepare the stock solution, according to the solubility of the product in different solvents. Please use it as soon as possible.

Note: The dilution table applies only to solid products. For liquid products, please calculate the stock solution based on the stated concentration and/or density.

Inhibitor · Natural Compounds · Compound Libraries · Recombinant Proteins

This product is for Research Use Only · Not for Human or Veterinary or Therapeutic Use

Tel: 781-999-4286 E_mail: info@targetmol.com Address: 34 Washington Street, Wellesley Hills, MA 02481