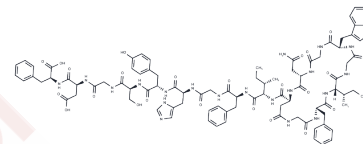


Anantin

Chemical Properties

CAS No. :	133658-45-4
Formula:	C90H111N21O24
Molecular Weight:	1870.97
Storage:	Keep away from moisture Powder: -20°C for 3 years In solvent: -80°C for 1 year <small>Actual storage temperature shall be subject to the COA.</small>



Biological Description

Description	Anantin, a natriuretic peptide receptor A antagonist, binds competitively to the atrial natriuretic factor (ANF) receptor from the bovine adrenal cortex ($K_d = 0.6 \mu\text{M}$) [1] [2].
-------------	---

Preparing Stock Solutions

	1mg	5mg	10mg
1 mM	0.5345 mL	2.6724 mL	5.3448 mL
5 mM	0.1069 mL	0.5345 mL	1.069 mL
10 mM	0.0534 mL	0.2672 mL	0.5345 mL
50 mM	0.0107 mL	0.0534 mL	0.1069 mL

Please select the appropriate solvent to prepare the stock solution, according to the solubility of the product in different solvents. Please use it as soon as possible.

Note: The dilution table applies only to solid products. For liquid products, please calculate the stock solution based on the stated concentration and/or density.

Inhibitor · Natural Compounds · Compound Libraries · Recombinant Proteins

This product is for Research Use Only · Not for Human or Veterinary or Therapeutic Use

Tel: 781-999-4286 E_mail: info@targetmol.com Address: 34 Washington Street, Wellesley Hills, MA 02481